

# COMMANDO JOE'S

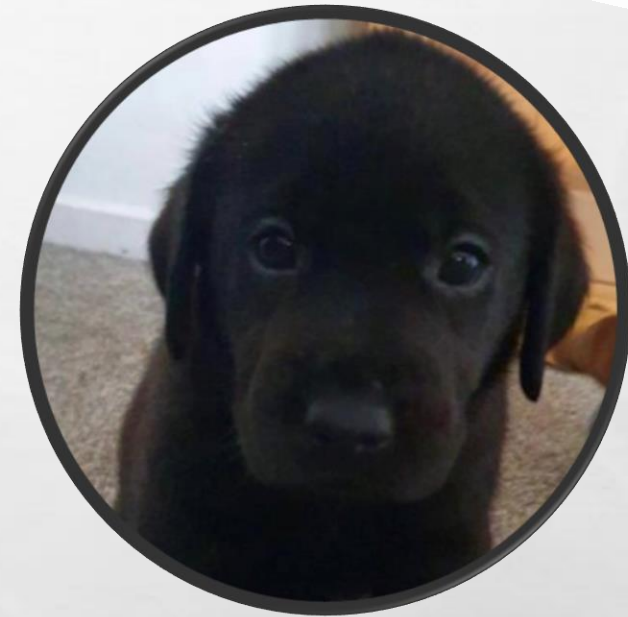
MEET OUR NEW RECRUIT .... COMMANDO GUS



**EVERYONE MEET  
ANGUS JET WOODLANDS  
OR  
GUS (FOR SHORT)**

He is a black Labrador and is 7 weeks old. He will need lots of support and training before he comes into school. He is excited but also a little nervous as it is a new place for him.

Keep on the look out for pupdates which are coming out regularly on his twitter feed [\*\*@GorgeousGus\*\*](#)



**TOP SECRET  
CLASSIFIED**

# THE SET UP ....

AS YOU ALL KNOW, SETTLING INTO A NEW ENVIRONMENT  
CAN BE QUIET TOUGH.

WE ALL NEED TO ENSURE THAT GUS FEELS WELCOME AND  
IS HAPPY HERE.

WHAT COULD WE DO TO HELP HIM FEEL WELCOME AND  
ENJOY HIS TIME HERE AT WOODLANDS?

**OUR TASK TODAY IS GOING TO BE TO DESIGN  
AND BUILD AN AGILITY COURSE FOR GUS TO  
EXERCISE AND PLAY ON.**



**WHICH  
OBSTACLE DO  
YOU LIKE THE  
BEST?**

# WHAT DO WE NEED TO INCLUDE IN OUR AGILITY COURSE?



# MISSION

WE WOULD LIKE YOU TO BUILD GUS AN AGILITY COURSE FROM ANY EQUIPMENT AVAILABLE FROM OUR COMMANDO JOE'S BOX.

- 1) FIRSTLY, YOU MUST DESIGN YOUR COURSE MAKING SURE THAT THE ROUTE IS EASY TO FOLLOW AND YOU INCLUDE AT LEAST 3 OF THE OBSTACLES LISTED - A HIGH JUMP / LONG JUMP / BALANCE BEAM / TUNNEL / BRICK WALL / SEE SAW / WEAVE POLES
- 2) AS A TEAM, CAN YOU DECIDE ON YOUR FINAL COURSE AND MAKE IT USING THE EQUIPMENT PROVIDED
- 3) TEST OUT THE AGILITY COURSE AS TEAMS AGAINST THE CLOCK.

# MISSION DEBRIEF

WELL DONE FOR CREATING SOME OUTSTANDING AND CHALLENGING AGILITY COURSES. NOW, I WANT YOU TO STOP AND THINK ABOUT THESE THREE QUESTIONS BELOW

....

DID YOU AND YOUR TEAM FOLLOW OUR R-E-S-P-E-C-T  
VALUES?

WHAT WENT WELL?

WHAT COULD YOU HAVE DONE BETTER?

**THANK YOU EVERYONE.**



**@GorgeousGus**

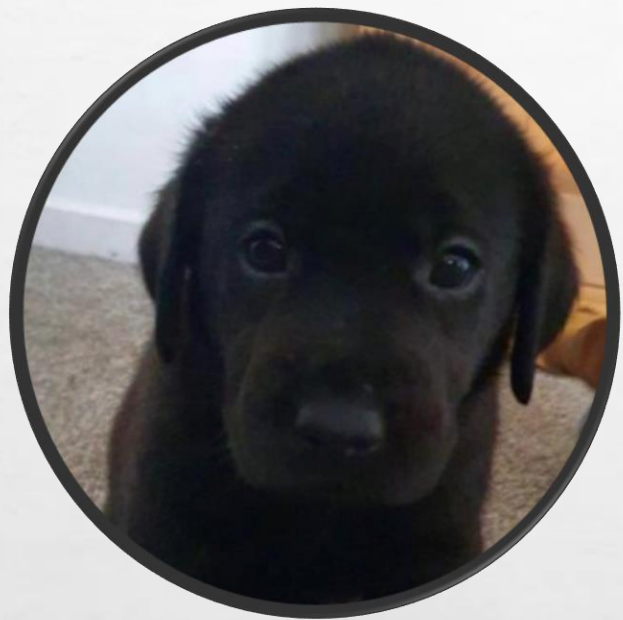
**@CoJoWoodlands**

**I CANNOT WAIT TO TRY OUT YOUR COURSES.**

**PLEASE REMEMBER TO TWEET ANY PICTURES**







# COMMANDO JOE'S

**COMMANDO GUS GETS STUCK**



# THE SET UP ....

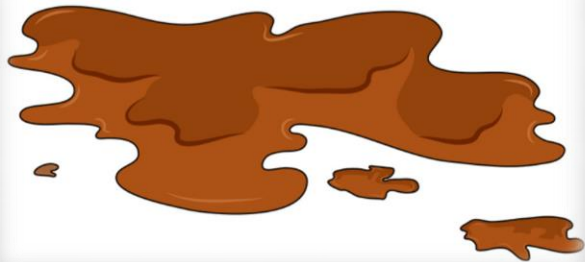
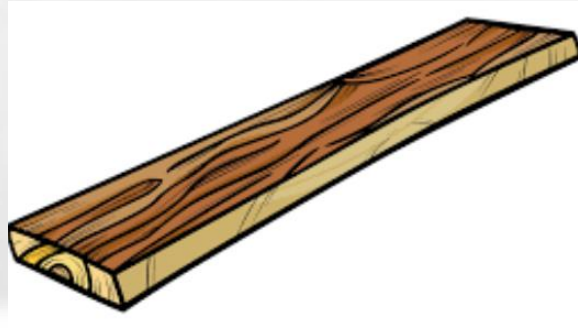


ON A WALK WITH HIS TRAINER, GUS (BEING HIS MISCHIEVOUS SELF) DECIDED TO GO EXPLORING AND UNFORTUNATELY GOT HIMSELF INTO A LITTLE BIT OF BOTHER IN A SWAMP OF MUD.

WE'VE GOT TO TRY AND GET HIM OUT BUT WE CAN'T WADE THROUGH THE THICK, STICKY MUD AS WE WOULD ALSO GET STUCK ...

WHAT CAN WE DO?

# OUR TASK TODAY IS TO NAVIGATE OUR WAY IN PAIRS ACROSS THE SWAMP TO RESCUE GUS FROM THE MUD.



YOU CAN USE ANY OBJECTS  
ALREADY THERE TO STAND ON BUT  
YOU CAN'T STEP IN THE MUD. IF  
YOU DO, YOU MUST GO BACK TO  
THE START.

YOU AND YOUR PARTNER JUST  
HAVE A PLANK - THAT YOU FOUND  
NEAR BY - TO HELP YOU NAVIGATE  
ACROSS.



# MISSION

WE WOULD LIKE YOU AND YOUR PARTNER TO RESCUE GUS FROM HIS PERIL. YOU NEED TO CARRY HIM GENTLY AND SAFELY BACK TO THE SAFETY OF THE STARTING POINT WHERE YOU CAN WHISK HIM OFF TO THE VET TO CHECK HIM OVER.

## R-U-L-E-S

- 1) YOU CAN USE ANY EQUIPMENT STRANDED IN THE STICKY SWAMP TO STEP ON TO KEEP YOURSELF OUT THE MUD. HOWEVER, IF YOU STEP IN OR FALL INTO THE MUD, YOU MUST START AGAIN.
- 2) YOU CAN ONLY USE THE ONE PLANK (THAT YOU FOUND NEARBY) TO HELP YOU NAVIGATE YOURSELF AND YOUR PARTNER OVER THE MUD.
- 3) BOTH YOU AND YOUR PARTNER NEED TO RESCUE GUS.

# MISSION DEBRIEF

WELL DONE FOR RESCUING GUS! HE IS NOW SAFE AND WELL AND RESTING AND RECOVERING FROM HIS ORDEAL.

NOW, I WANT YOU TO STOP AND THINK ABOUT THESE THREE QUESTIONS BELOW ....

DID YOU AND YOUR PARTNER FOLLOW OUR R-E-S-P-E-C-T  
VALUES?

WHAT WENT WELL?

WHAT COULD YOU HAVE DONE BETTER?

**THANK YOU EVERYONE.**



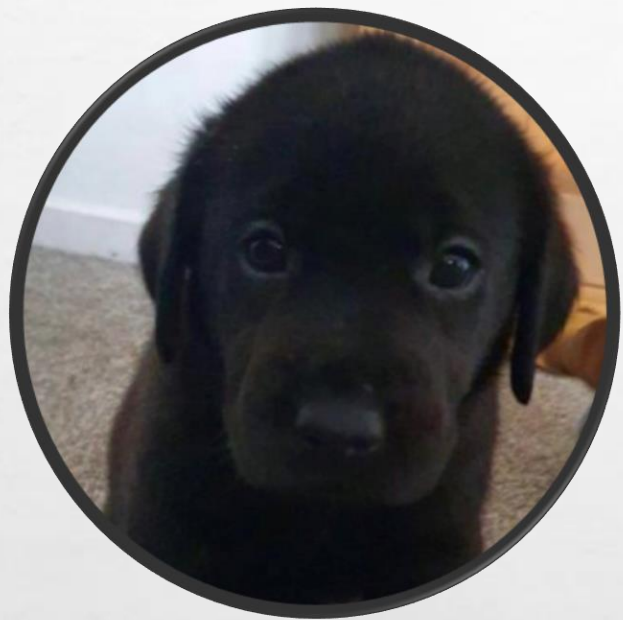
**@GorgeousGus**

**@CoJoWoodlands**

**I AM WARM AND SAFE NOW - THANKS TO YOU.**

**PLEASE REMEMBER TO TWEET ANY PICTURES**





# COMMANDO JOE'S

**COMMANDO GUS NEEDS A HOME**





# THE SET UP ....



GUS WILL SOON BE COMING TO STAY WITH US AND HE NEEDS SOMEWHERE HE CAN GO AND RETREAT TO WHEN HE NEEDS A REST OR HIS OWN SPACE

WHAT COULD WE DO TO PROVIDE HIM WITH THIS?

# OUR TASK TODAY IS TO CREATE A DOG HOUSE FOR GUS.

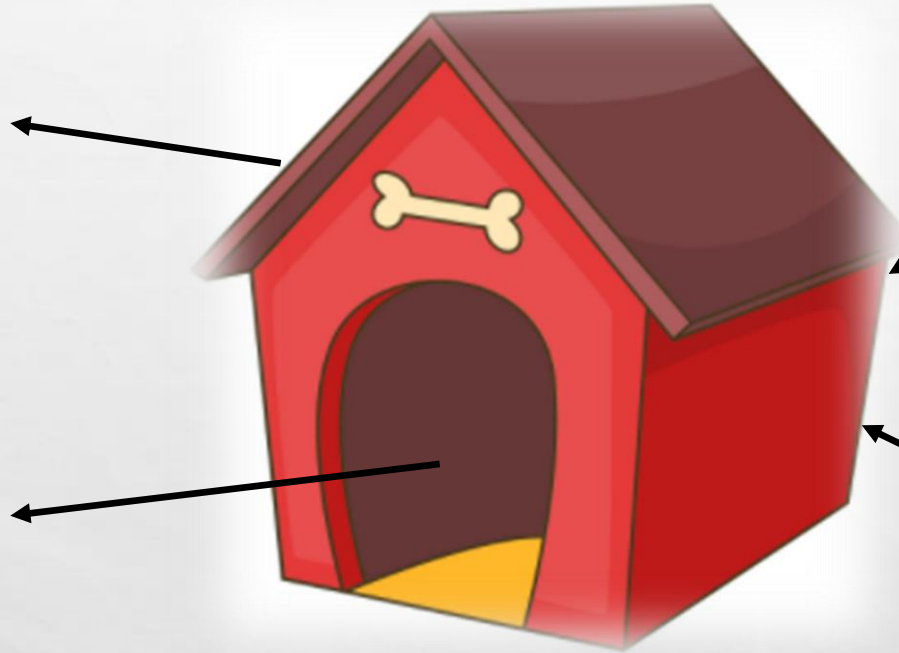


YOU CAN USE ANY EQUIPMENT FROM THE COMMANDO JOE'S BOX TO CREATE YOUR DOG HOUSE ALTHOUGH IT NEEDS TO HAVE GUS' NEEDS AT THE CENTRE OF ITS DESIGN AND CREATION.

# WHAT DO WE NEED TO THINK ABOUT WHEN BUILDING OUR DOG HOUSE?

**IT NEEDS TO PROTECT HIM FROM ALL THE ELEMENTS.**

**HAS AN ENTRANCE BIG ENOUGH FOR HIM TO GET INTO AND GROW INTO.**



**BE LARGE ENOUGH FOR HIM TO TURN AROUND IN BUT NOT TOO BIG SO THAT IT GETS COLD**

**BE DURABLE AND STURDY**

# MISSION

WE WOULD LIKE YOU TO WORK IN TEAMS TO DESIGN AND CREATE A  
DOG HOUSE FOR GUS

IT MUST HAVE GUS' NEEDS AT THE CENTRE OF ITS  
DESIGN AND BUILD. WE WANT HIM TO FEEL SAFE  
AND WELCOME.

YOU CAN USE ANY EQUIPMENT FROM THE COMMANDO JOE'S BOX

# MISSION DEBRIEF

WELL DONE! YOUR BUILDS ARE OUTSTANDING. WE ARE SURE HE WILL ABSOLUTELY ADORE THEM.

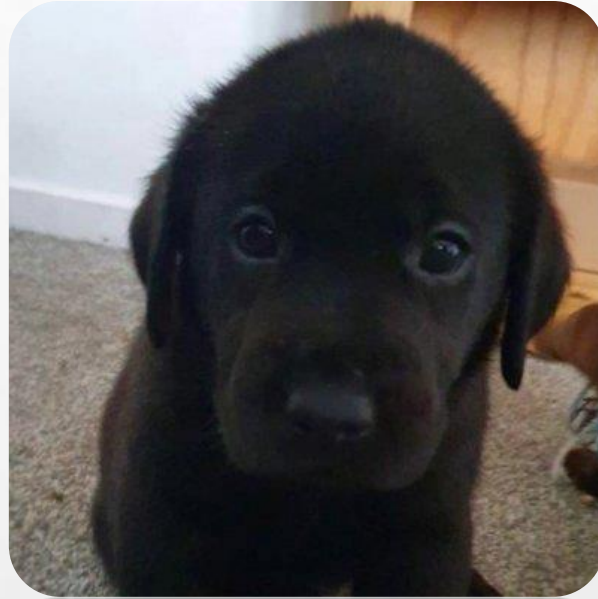
NOW, I WANT YOU TO STOP AND THINK ABOUT THESE THREE QUESTIONS BELOW ....

DID YOU AND YOUR TEAM FOLLOW OUR R-E-S-P-E-C-T VALUES?

WHAT WENT WELL?

WHAT COULD YOU HAVE DONE BETTER?

**THANK YOU EVERYONE.**



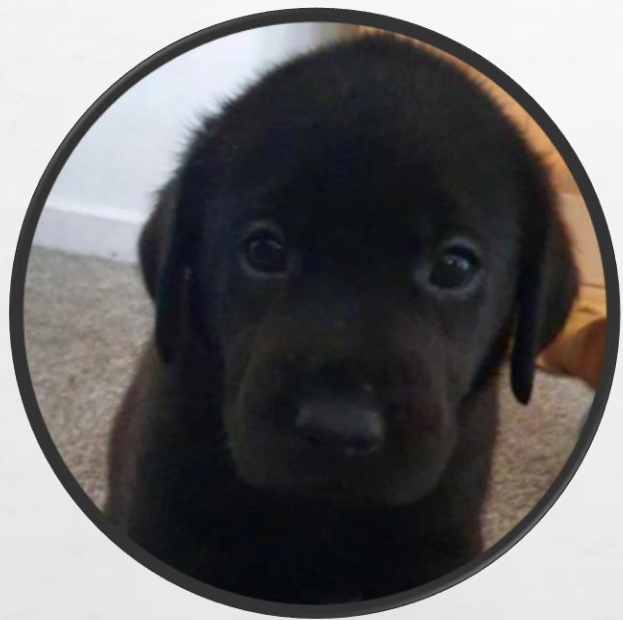
**@GorgeousGus**

**@CoJoWoodlands**

**I CANNOT WAIT TO SETTLE IN TO MY NEW HOME.**

**PLEASE REMEMBER TO TWEET ANY PICTURES**





# COMMANDO JOE'S

COMMANDO GUS GETS A JOB



# THE SET UP ....



GUS IS DOING VERY WELL IN HIS TRAINING.  
SO MUCH SO THAT THE TRAINER THINKS  
THAT HE HAS THE POTENTIAL TO BECOME A  
GUIDE DOG FOR THE BLIND.

HOW DO YOU THINK WE COULD HELP WITH  
HIS TRAINING?



**OUR TASK TODAY IS TO DESIGN AND CREATE  
A COURSE WHICH SIMULATES THE  
SITUATIONS HE MIGHT FIND HIMSELF IN  
WHEN GUIDING.**



**YOU CAN USE ANY EQUIPMENT  
FROM THE COMMANDO JOE'S  
BOX TO BUILD YOUR COURSE.**

# WHAT ELEMENTS DO YOU THINK ARE IMPORTANT TO SIMULATE?

**NOISES ON THE STREET**



**OTHER PEOPLE / OBJECTS IN THE WAY**



**TRAFFIC / CARS**



**FOLLOWING INSTRUCTIONS**



# MISSION

WE WOULD LIKE YOU TO **DESIGN AND CREATE A COURSE WHICH SIMULATES THE SITUATIONS GUS MIGHT FIND HIMSELF IN WHEN GUIDING.**

ONCE YOU HAVE DESIGNED AND CREATED YOUR COURSE (WHICH TESTS THE KEY JOBS OF A GUIDE DOG) I WOULD LIKE YOU IN PAIRS TO TEST IT.

NOMINATE ONE PERSON TO BE GUS AND THE OTHER TO BE THE OWNER - THE OWNER MUST WEAR A BLIND FOLD AND THEN BE GUIDED AROUND THE COURSE. THE CHILD PLAYING GUS MUST MAKE SURE THAT THEIR OWNER GETS AROUND THE COURSE SAFELY AND IN GOOD TIME.

# MISSION DEBRIEF

WELL DONE! QUS WILL NOW STAND A REALLY GOOD CHANCE  
OF PASSING GUIDE DOG TRAINING.

NOW, I WANT YOU TO STOP AND THINK ABOUT THESE THREE  
QUESTIONS BELOW ....

DID YOU AND YOUR PARTNER FOLLOW OUR R-E-S-P-E-C-T  
VALUES?

WHAT WENT WELL?

WHAT COULD YOU HAVE DONE BETTER?

**THANK YOU EVERYONE.**



**@GorgeousGus**

**@CoJoWoodlands**

**I CANNOT WAIT TO TRY OUT MY NEW TRAINING COURSE.**

**PLEASE REMEMBER TO TWEET ANY PICTURES**

