

Old Toys

What Do Old Toys Look Like?

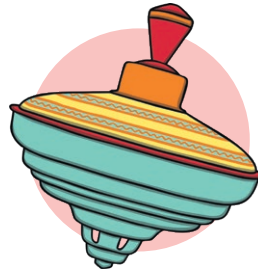
Old toys come in lots of different shapes and sizes. Popular old toys include:



rag doll



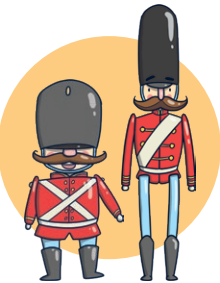
pull-along toy



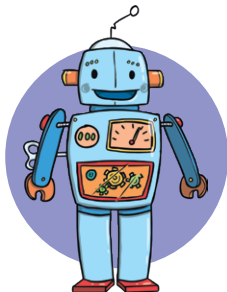
spinning top



teddy bear



toy soldiers



tin robot



doll's house



rocking horse

Differences

Old and new toys are different in many ways. Old toys were made from different things and made in different ways to new toys.

Old toys were usually made from wood, metal or fabric. These toys were all handmade. This meant they took a long time to make.



Did You Know?

The oldest toy ever found in the UK is over 2000 years old!

Questions

1. Which of these is an old toy? Tick two.

- ☐ tin robot
- ☐ laptop
- ☐ rag doll

2. How are old toys different to new toys? Tick one.

- ☐ New toys are quieter.
- ☐ Old toys were bigger.
- ☐ They were made from different things.

3. What were old toys usually made from? Tick two.

- ☐ wood
- ☐ metal
- ☐ plastic

4. Old toys took a long time to make. Why was this? Tick one.

- ☐ because they were big
- ☐ because they were handmade
- ☐ because they were soft

5. How old is the oldest toy ever found in the UK? Tick one.

- ☐ 500 years old
- ☐ 2000 years old
- ☐ 10 years old

Answers

1. Which of these is an old toy? Tick two.

- ☒ **tin robot**
- ☐ laptop
- ☒ **rag doll**

2. How are old toys different to new toys? Tick one.

- ☐ New toys are quieter.
- ☐ Old toys were bigger.
- ☒ **They were made from different things.**

3. What were old toys usually made from? Tick two.

- ☒ **wood**
- ☒ **metal**
- ☐ plastic

4. Old toys took a long time to make. Why was this? Tick one.

- ☐ because they were big
- ☒ **because they were handmade**
- ☐ because they were soft

5. How old is the oldest toy ever found in the UK? Tick one.

- ☐ 500 years old
- ☒ **2000 years old**
- ☐ 10 years old

Old Toys

What Do Old Toys Look Like?

Old toys come in lots of different shapes and sizes. Here are a few you might have seen before.



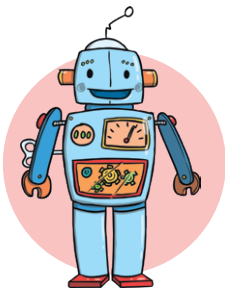
Rag Dolls

Rag dolls are soft, stuffed toys. Their hair is usually made from wool. Rag dolls used to be made from scraps of material.



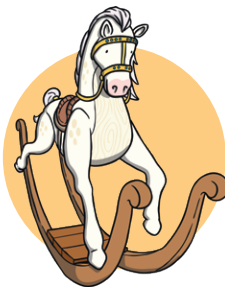
Teddy Bears

Teddy bears have been around for a long time and they are still popular today. Teddy bears are soft toys. Today, they are often made in the shape of different animals.



Tin Robots

Tin robots usually had a small metal key attached to them which you turned lots of times. This would make small wheels inside the toy turn and make it move.



Rocking Horses

Rocking horses were made from wood and sometimes had real horse hair. Today, rocking horses are usually made from plastic.

Comparing Old and New Toys

Old toys are different to new toys in many ways. These include what they were made from, how they were made and how they moved.

Many old toys were handmade. This meant they took a long time and cost a lot of money to make.

Questions

1. What is a rag doll's hair usually made from? Tick one.

- ☐ paper
- ☐ string
- ☐ wool

2. On a tin robot, what does the small metal key do when you turn it?

3. What were old rocking horses made from? Tick one.

- ☐ wood
- ☐ plastic
- ☐ metal

4. Draw a line to complete the sentences.

Rag dolls are •

• usually made from plastic.

Today, rocking horses are •

• soft, stuffed toys.

Many old toys were •

• handmade.

5. Complete this sentence.

This meant they took a long time and cost a lot of _____ to make.

material

people

money

Answers

1. What is a rag doll's hair usually made from? Tick one.

- ☐ paper
☐ string
☒ **wool**

2. On a tin robot, what does the small metal key do when you turn it?

It makes small wheels inside the toy turn/It makes the toy move.

3. What were old rocking horses made from? Tick one.

- ☒ **wood**
☐ plastic
☐ metal

4. Draw a line to complete the sentences.

Rag dolls are	usually made from plastic.
Today, rocking horses are	soft, stuffed toys.
Many old toys were	handmade.

5. Complete this sentence.

This meant they took a long time and cost a lot of money to make.

material

people

money

Old Toys

What Do Old Toys Look Like?

Old toys come in lots of different shapes and sizes. Some are still played with today. Here are a few you might recognise.



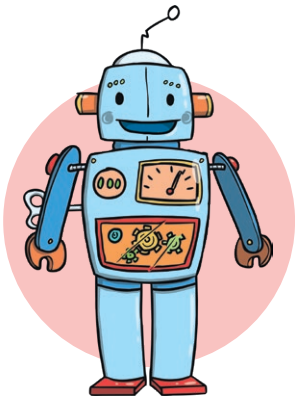
Rag Dolls

Rag dolls are soft, stuffed toys. Their hair is usually made from wool or yarn. They were traditionally home-made (and stuffed) with scraps of old material. Their faces were either drawn or sewn (embroidered) on.



Teddy Bears

Teddy bears have been around for more than 100 years and they are still popular to this day. Today, they are often made in the shape of different animals. Teddy bears were named after American president Theodore 'Teddy' Roosevelt.



Tin Robots

Tin robots usually had a small metal key attached to them which you turned lots of times. This would make wheels (or gears) inside the toy turn and make the robot move. This is called 'clockwork'.



Rocking Horses

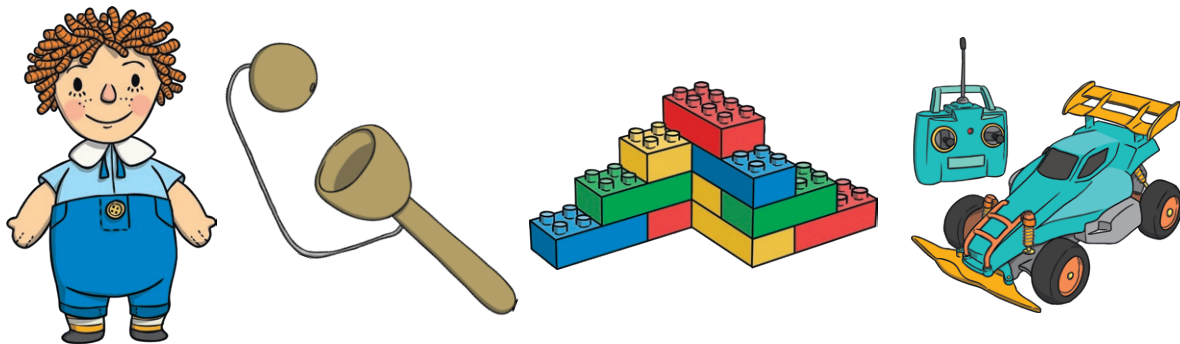
Rocking horses were originally made from wood and sometimes had real horse hair in their manes and tails. They were hollow and sometimes had a hidden compartment in their bellies.

Comparing Old and New Toys

Old toys are different in many ways to new toys. These include what they were made from and how they were made.

Materials

Old toys were usually made from materials such as wood, metal, glass and fabric. New toys are often made from plastic and need batteries or electricity to make them work.



Construction

Old toys were made differently to how toys are made today. Old toys were all handmade. This meant that they took a long time and cost a lot of money to make. It also meant that fewer toys could be made. Lots of new toys are made from plastic. This is cheaper because it can be melted and poured into moulds so lots of toys can be made at the same time. Toys are also mostly made by machines in factories now.

Did You Know?

The biggest collection of teddy bears ever auctioned contained 1300 bears and sold for £1.1 million!



Questions

1. How were rag dolls traditionally made? Tick one.

- ☐ in a factory
- ☐ with scraps of old material
- ☐ with pieces of wood

2. How long have teddy bears been around for?

3. Draw a line to match the facts to the toys.

teddy bear •

• This toy used clockwork to move.

tin robot •

• This toy had a hidden compartment in its belly.

rocking horse •

• This toy was named after an American president.

4. Find a word in the text that means the same as **empty**.

5. Name three materials old toys were usually made from.

1. _____

2. _____

3. _____

6. Why do you think most toys are made in factories now?

Answers

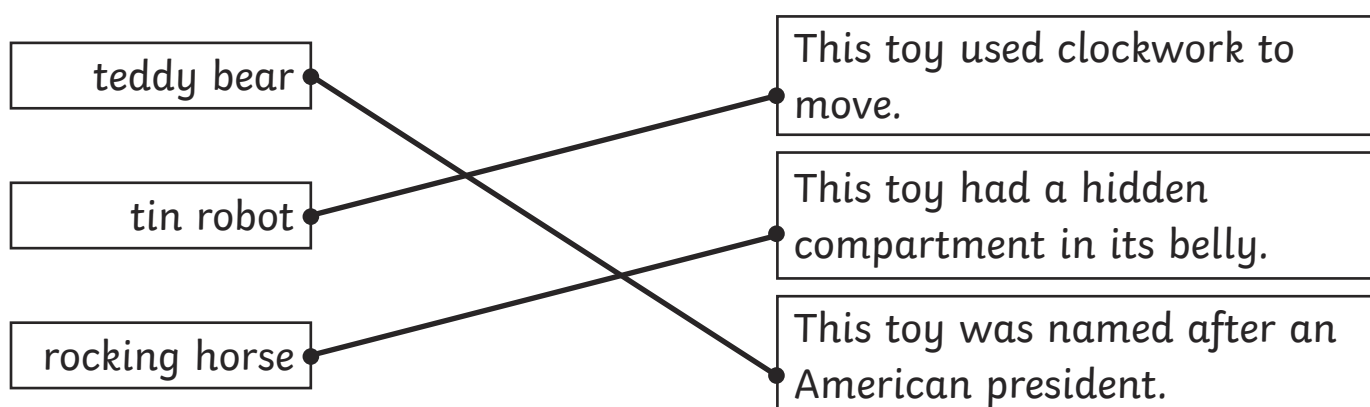
1. How were rag dolls traditionally made? Tick one.

- ☐ in a factory
- ☒ **with scraps of old material**
- ☐ with pieces of wood

2. How long have teddy bears been around for?

For more than 100 years.

3. Draw a line to match the facts to the toys.



4. Find a word in the text that means the same as **empty**.

hollow

5. Name three materials old toys were usually made from.

Any three from the following: wood, metal, glass and fabric.

6. Why do you think most toys are made in factories now?

Answers should relate to it being quicker and cheaper to make toys in factories. More toys can also be made at the same time.